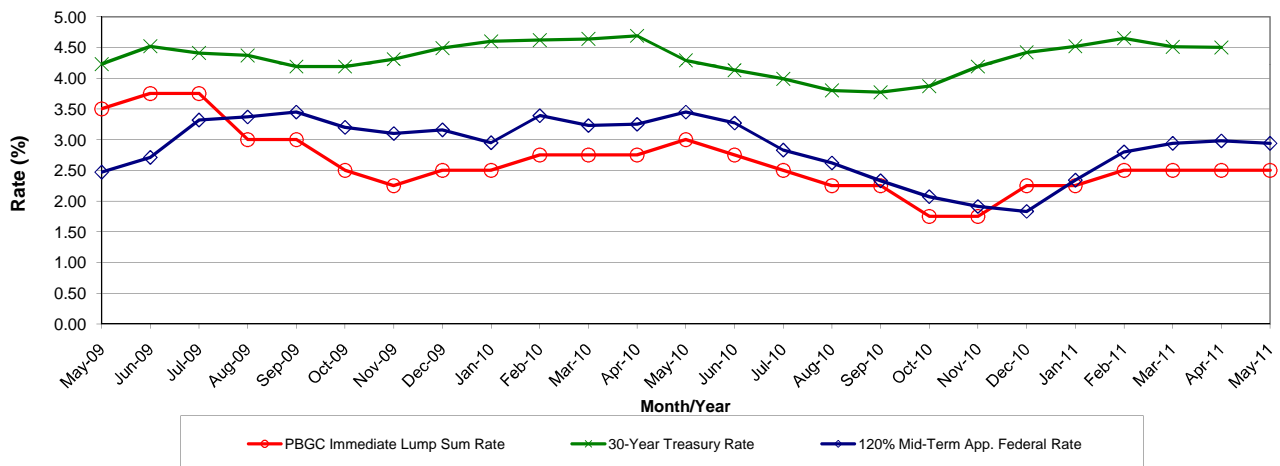


Interest Rate Update

Month	PBGC Immed. Lump Sum Rate (Note 1)	PBGC Termination Annuity (Select Rate) (Note 2)	PBGC Termination Annuity Rate (Ultimate Rate) (Note 3)	PBGC Variable Rate Premium (Note 4) (Starting Jan. 1, 2008 - 1st, 2nd, and 3rd Segment Rates)			Weighted Average Corp. Bond Rate (Note 5)	Permissible Range of Interest Rates (Current Liability) (Note 6)	30-Year Treasury Rate (GATT)	EE Contr. 120%	Ext. of Amor. Per 150%	Late Contr. 175%	Month
				Mid-Term AFR for									
May-09	3.50	5.50	5.02	5.12	7.15	6.92	6.43	5.78 to 6.43	4.23	2.47	3.08	3.60	May-09
Jun-09	3.75	5.50	5.02	4.27	7.00	6.77	6.46	5.81 to 6.46	4.52	2.71	3.39	3.96	Jun-09
Jul-09	3.75	5.31	5.04	3.89	6.59	6.55	6.47	5.83 to 6.47	4.41	3.32	4.15	4.86	Jul-09
Aug-09	3.00	5.31	5.04	3.39	6.28	6.47	6.48	5.83 to 6.48	4.37	3.37	4.21	4.93	Aug-09
Sep-09	3.00	5.31	5.04	3.08	5.94	6.21	6.47	5.83 to 6.47	4.19	3.45	4.33	5.05	Sep-09
Oct-09	2.50	5.30	5.01	2.73	5.63	6.07	6.46	5.82 to 6.46	4.19	3.20	4.00	4.67	Oct-09
Nov-09	2.25	5.30	5.01	2.60	5.58	6.07	6.44	5.80 to 6.44	4.31	3.10	3.90	4.55	Nov-09
Dec-09	2.50	5.30	5.01	2.35	5.57	6.29	6.42	5.78 to 6.42	4.49	3.16	3.97	4.64	Dec-09
Jan-10	2.50	4.89	4.63	2.35	5.65	6.45	6.42	5.77 to 6.42	4.60	2.95	3.69	4.32	Jan-10
Feb-10	2.75	4.89	4.63	2.31	5.64	6.47	6.41	5.77 to 6.41	4.62	3.39	4.24	4.96	Feb-10
Mar-10	2.75	4.89	4.63	2.29	5.77	6.63	6.40	5.76 to 6.40	4.64	3.23	4.05	4.72	Mar-10
Apr-10	2.75	4.63	4.51	2.29	5.65	6.58	6.39	5.75 to 6.39	4.69	3.25	4.06	4.74	Apr-10
May-10	3.00	4.63	4.51	2.30	5.60	6.47	6.37	5.73 to 6.37	4.29	3.45	4.33	5.05	May-10
Jun-10	2.75	4.63	4.51	2.34	5.42	6.26	6.34	5.71 to 6.34	4.13	3.27	4.09	4.79	Jun-10
Jul-10	2.50	4.93	4.66	2.35	5.35	6.29	6.32	5.68 to 6.32	3.99	2.83	3.54	4.14	Jul-10
Aug-10	2.25	4.93	4.66	2.06	5.10	6.11	6.28	5.65 to 6.28	3.80	2.62	3.29	3.84	Aug-10
Sep-10	2.25	4.93	4.66	1.81	4.81	5.88	6.24	5.62 to 6.24	3.77	2.33	2.92	3.41	Sep-10
Oct-10	1.75	4.48	4.51	1.74	4.75	6.03	6.21	5.59 to 6.21	3.87	2.07	2.60	3.03	Oct-10
Nov-10	1.75	4.48	4.51	1.56	4.73	6.22	6.17	5.55 to 6.17	4.19	1.91	2.38	2.79	Nov-10
Dec-10	2.25	4.48	4.51	1.65	4.91	6.52	6.14	5.52 to 6.14	4.42	1.83	2.29	2.68	Dec-10
Jan-11	2.25	4.07	3.93	1.98	5.23	6.52	6.12	5.51 to 6.12	4.52	2.34	2.93	3.43	Jan-11
Feb-11	2.50	4.07	3.93	1.93	5.25	6.42	6.10	5.49 to 6.10	4.65	2.80	3.51	4.10	Feb-11
Mar-11	2.50	4.07	3.93	2.02	5.34	6.54	6.08	5.47 to 6.08	4.51	2.94	3.68	4.30	Mar-11
Apr-11	2.50	3.96	4.32	1.91	5.23	6.46	6.06	5.45 to 6.06	4.50	2.98	3.74	4.37	Apr-11
May-11	2.50	3.96	4.32						2.94	3.68	4.30		May-11

Interest Rate Trend Chart



Note 1: Immediate interest rate used to determine the value of lump sum benefits paid by the PBGC under plans that it trustees. Rate applies for valuation dates during the month for which the rate is shown.

Note 2: Select interest rate used by the PBGC to determine the present value of annuities in involuntary and distress terminations for single-employer plans and certain multiemployer plans. Select rate applies for valuation dates occurring in the month for which the rate is shown and is used to value the first 20 years of annuity payments. However, from October 2010 through March 2011 it was used to value the first 25 years of payments.

Note 3: Ultimate interest rate used by the PBGC to determine the present value of annuities in involuntary and distress terminations for single-employer plans and certain multiemployer plans. Ultimate rate applies for valuation dates occurring in the month for which the rate is shown and is used to value annuity payments made after the first 20 years. However from October 2010 through March 2011 it was used after the first 25 years of payments.

Note 4: Interest rate used by the PBGC to value vested benefits for variable rate premium purposes. Rate applies for premium payment years beginning in the month for which the rate is shown.

Note 5: Weighted average interest rate used to calculate current liabilities for private-sector plans based on long-term corporate bonds. Rate applies to plan years beginning in the month for which the rate is shown.

Note 6: Permissible range of weighted average interest rates used to calculate current liabilities for private-sector plans. Rates apply to plan years beginning in the month for which the rates are shown.

Sources & Links:

1. 30-Year Treasury (GATT) Rate: <http://www.federalreserve.gov/Releases/H15/>
2. PBGC Rates: <http://www.pbqc.gov/practitioners/interest-rates/content/index.html>
3. Weighted Average Rates and Applicable Federal Rates: <http://www.irs.gov/irb/>
4. IRS Notice 2004-34: <http://www.treas.gov/press/releases/reports/notice.pdf>
5. IRS Notice 2006-75: <http://www.irs.gov/pub/irs-drop/n-06-75.pdf>